

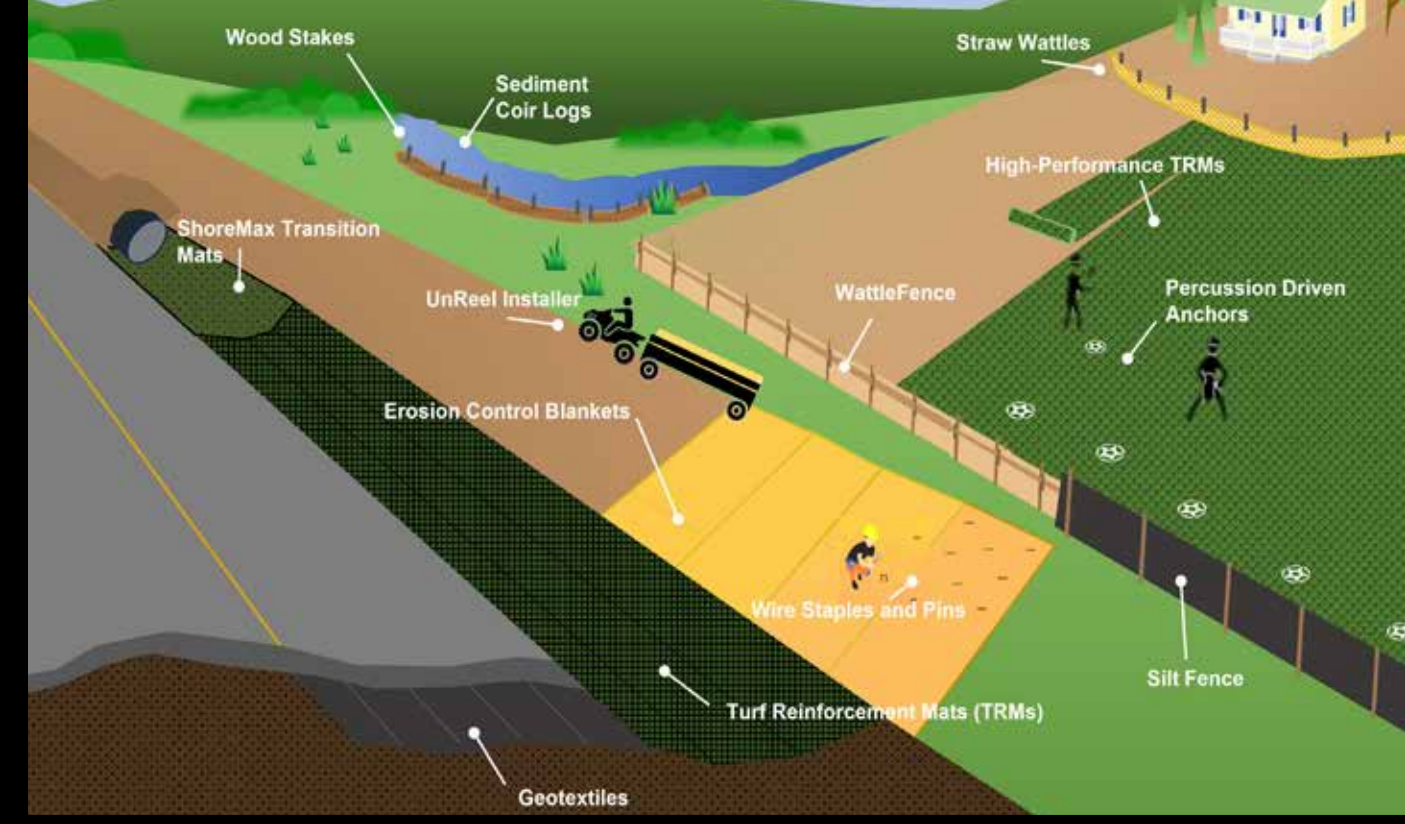


WHOLESALE PRODUCTS

CATALOG

CIVIL CONSTRUCTION SITE SUPPLIES





PRODUCT CATEGORY INDEX

Construction Fencing Solutions **pg. 4-7**

Commercial Grade Silt Fence
 Preassembled Silt Fence
 DOT Grade Silt Fence
 Wire-backed Silt Fence
 Safety & Barrier Fencing
 Stakes & Posts

Geotextile & Landscape Fabrics **pg. 8-11**

High-Performance Wovens
 Nonwovens
 Ground Covers
 Needle Punched Ground Covers

Erosion Control **pg. 12-17**

Erosion Control Blankets
 Turf Reinforcement Mats
 High Performance Turf Reinforcement Mats
 Transition Mats
 Coir Mat
 Jute Mat

Base Reinforcement **pg. 18-20**

Geogrids
 Geocells
 Construction Protection

Nursery Products **pg. 21**

Tree Guying Kits

Sediment Control **pg. 22-27**

Sediment Wattles
 Coir Logs
 WattleFence
 Dewatering Bags
 Silt Sacks
 Turbidity Barriers

Anchor Solutions **pg. 28-33**

Percussion Driven Anchors
 Anchoring Tools
 Drive Rods
 Gas Powered Drivers
 JackJaws
 Hex Twist Pins

Ground Fasteners **pg. 34-39**

Wire Staples
 Fabric Pins
 Biodegradable Stakes
 Wood Log Stakes
 Installation Tools



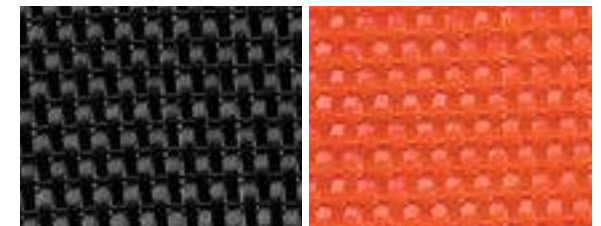
FENCING SOLUTIONS

Commercial Grade Silt Fence Fabrics

Varying fabric weights available in large rolls ready to install on-site or preassembled with wood stakes.

COMMERCIAL GRADE SILT FENCE
AVAILABLE IN BLACK AND ORANGE

CUSTOM PRINTING AVAILABLE



COMMERCIAL GRADE SILT FENCE FABRIC



Product Description: 60g, 70g, 100g
Fabric rolls for on-site staking

Unit Size: 36" x 1500'
24" x 1500'

Additional Details: Available with
custom printing. Can be installed with
wood or metal t-stakes.

PREASSEMBLED SILT FENCE With WOOD STAKES



Product Description: 60g, 70g, 100g
Unit Size: 36" x 100', 24" x 100'

Wood Stake Lengths: 36" and 48"
Wood Stake Diameters:
C: 1.125" x 1.125" actual
E: 1.25" x 1.25" actual
B: 1.5" x 1.5" actual
J: 2.0" x 2.0" actual

Wood Stake Spacing: Available in 4' to 10'
Centers.

Available with custom printing & wood laths

PREASSEMBLED SILT FENCE DOT GRADE



Product Description: DOT listed fabrics
based on State DOT requirements

Unit Size: 36" x 100' typical. Customized
based on requirements

Additional Details: Contact a sales rep
for more details.

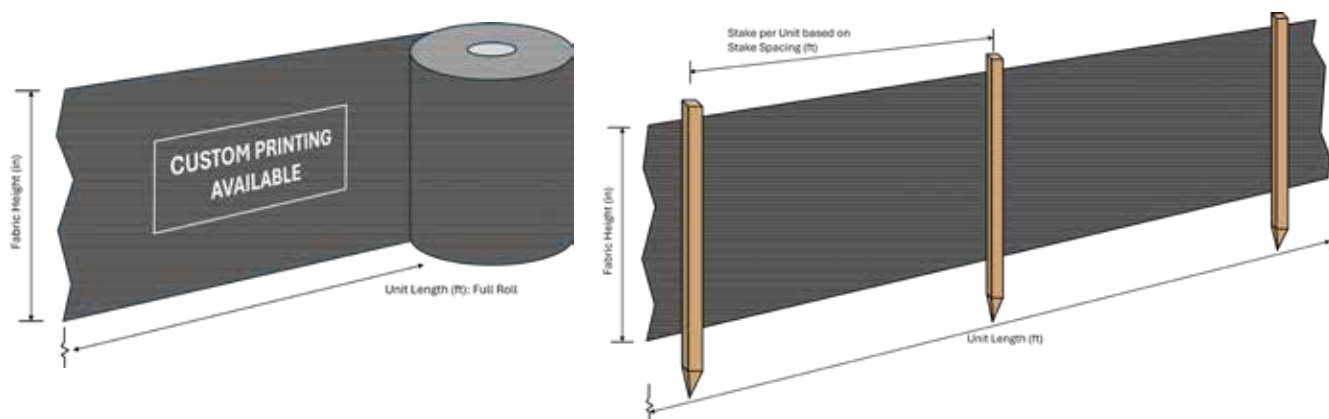
WIRE-BACKED SILT FENCE



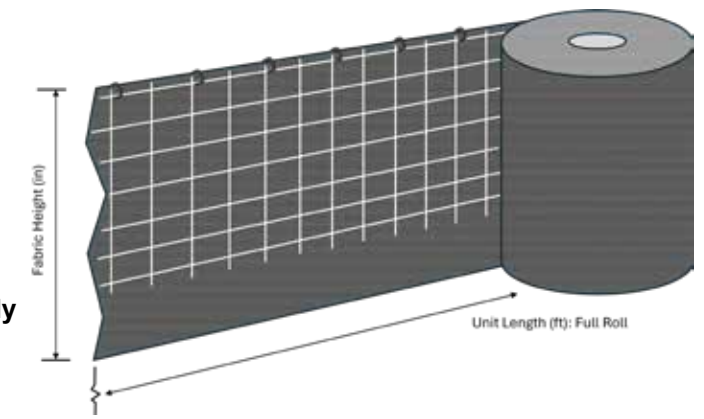
Product Description: 14 gauge Field
Fence or 12, 14, or 16 ga Welded Wire

Unit Size: 36" x 330' max roll

Additional Details: Available with
custom printing. Can be added to any
of our commercial grade silt fence fabric
options.



- Sediment Containment
- Perimeter Control
- Stockpile Protection
- Crowd/People Control
- Contractor General & DOT use
- Preassembled for quicker install
- Commercial Grade Fabrics for assembly on-site





WOOD STAKES FOR SILT FENCE



Product Description: Hardwood Pencil-point stakes in varying dimensions

Wood Stake Lengths: 36" and 48"

Wood Stake Diameters:
 C: 1.125" x 1.125" actual
 E: 1.25" x 1.25" actual
 B: 1.5" x 1.5" actual
 J: 2.0" x 2.0" actual

METAL T-POSTS



Product Description: T-rail posts coated. Available in 0.95, 1.25, or 1.33 lb/ft

Unit Size: 4' and 6'

Applications:

- Wire Fencing
- Wire Mesh Fencing
- Silt Fence
- Trellising

SAFETY PERIMETER FENCE



Product Description: High visibility orange woven geotextile in master rolls or attached to 1.25" x 1.25" x 60" wood stakes

Unit Size: 4' x 1000' Non-staked
 36" x 100' - Staked

Additional Details: UV resistant, polyethylene coated polypropylene fabric

BARRIER FENCE



Product Description: Barrier fence mesh
 Oval: Medium weight, flat laminar design
 Diamond: Heavy weight, dimensional

Unit Size: 4' x 100'
Additional Details: Good for construction warning barricade, sporting events, ski areas

Commercial Grade Silt Fence								
Build your Own Options								
	Fabric Weight (g)	Fabric Height (in)	Unit Length (ft)	# Stakes/ Unit	Stake Length (ft)	Stake Dimensions (in)	Custom Additions	Product SKU
Commercial Grade Preassembled with Wood Stake	60 70 100	24 36	100	11 13 17 21	3 4	C (1.125 x 1.125) E (1.25 x 1.25) B (1.5 x 1.5) J (2.0 x 2.0)	L = Wood Laths P = Custom Printed	SKU name based on selection
Commercial Grade Silt Fence Fabric Only	60 70 100	24 36	1500				P = Custom Printed	SKU name based on selection
	Fabric Weight (g)	Fabric Height (in)	Unit Length (ft)	Wire Gauge	Wire Height (in)	Wire Aperture (in)	Custom Additions	Product SKU
Commercial Grade Silt Fence Fabric with Wire-Back	60 70 100	24 36	100 330 max	12 ga 14 ga 16 ga	20-24 Height based on Fabric heights	2 x 4 2 x 6 FF (Field Fence)	P = Custom Printed	SKU name based on selection

Safety/Barrier Fence				
	Fabric Weight (g)	Fabric Height (in)	Unit Length (ft)	Product SKU
Safety Perimeter Fence	Orange Fabric	48	1000'	TF-SPF-48X1000
	Orange Staked	36"	100'	TF-SPF-36-100-11-5B
Barrier Fence	Oval Orange	48	100'	FENCE-S4X100-8
	Diamond Orange	48	100'	FENCE-S4X100-D

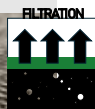
Steel T-Post				
Weight (lbs/ft)	Length	Finish	Bundle Qty	Product SKU
.95	4	Uncoated	200	TPOST-095-4U
	6	Uncoated	200	TPOST-095-6U
1.25	4	Uncoated	200	TPOST-125-4U



GEOTEXTILE FABRICS

The Talon Fabric Geotextiles offer a fabric for every application from separation, filtration, reinforcement, containment, drainage and more.

WOVEN HIGH-PERFORMANCE GEOTEXTILE FABRIC



Product Description: varying tensile strength/woven grades

Unit Size: 15' x 300' rolls

Applications:

- Excellent for high load capacity uses
- Road reinforcement
- Driveway stabilization
- Retaining walls
- Filtration uses

NONWOVEN GEOTEXTILE FABRIC



Product Description: 4 oz, 6 oz, 8 oz, 10 oz, 12 oz, and 16oz. nonwoven polypropylene fabric

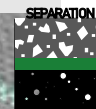
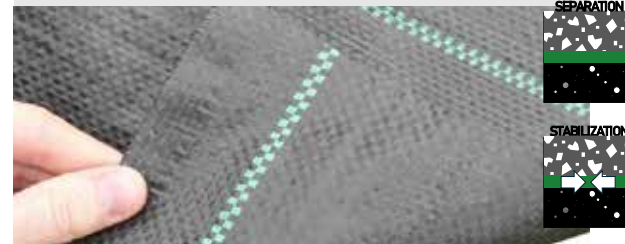
Unit Size: 3', 4', 6', 7.5', 12', and 15' roll widths by 360' roll lengths

Applications:

- Lighter strength fabric for filtration
- Drain fields
- Separation lining for rock and mulch



GROUND COVER FABRIC (WOVEN)



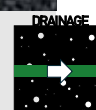
Product Description: 3 oz. polypropylene woven fabric

Unit Size: 3', 4', 6', 10', 12', 15' x 300' Rolls

Applications:

- Commercial landscape fabric for weed barriers
- Ground cover
- Landscape rock and beds
- Nursery uses
- Farming/planting stripes
- UV protection added
- Can be left exposed

NEEDLE PUNCHED GROUND COVER FABRIC

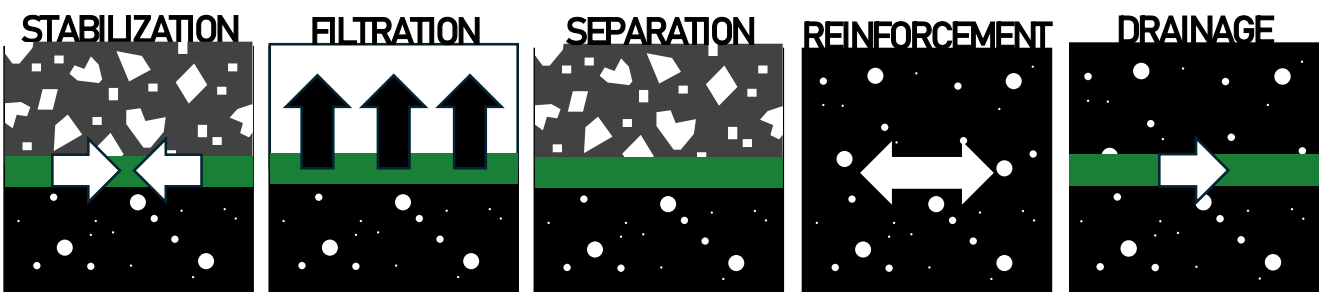


Product Description: 5 oz. two-layer fabric,utilizing a nonwoven material that is mechanically needle punched onto a woven polypropylene ground cover fabric

Unit Size: 3', 4', 5', 6', 8', & 12' X 250' Rolls

Applications:

- Commercial landscape fabric for weed control, while allowing air, water to pass through.
- Heavy-duty
- Resists rotting and degradation
- Soil Separation
- Drainage applications
- General Landscaping





	FABRIC Application	ROLL WIDTH (FT)	ROLL LENGTH (FT)	PRODUCT SKU
WOVEN GEOTEXTILES	Separation	15	300	TF-200S-T-15X300*
	Separation	15	300	TF-315S-T-15X300*
	Stabilization	12.5	432	TF-200W-12.5X432
	Stabilization	15	300	TF-270W-15X300
	Stabilization	15	300	TD-300W-15X300
	Stabilization	15	300	TF-320W-T-15X300*
	Stabilization	15	300	TF-370W-T-15X300*
	Stabilization	15	300	TF-570W-T-15X300*
	Filtration	15	300	TF-402F-T-15X300*
	Filtration	15	300	TF-404F-T-15X300*
	Filtration	15	300	TF-700F-T-15X300*
	Reinforcement	15	300	TF-1084R-T-15X300*

MARV Property	Mechanical Properties			Hydraulic Properties		
	Wide-width Tensile Strength @Ultimate	Wide-width Tensile Strength @ 5% strain	Trapezoidal Tear	Water Flow Rate	Permittivity	Apparent Opening Size (AOS)
Test Method	ASTM D4595	ASTM D4595	ASTM D4533	ASTM D4491	ASTM D4491	ASTM D4751
Unit	PSF (kN/m)	PSF (kN/m)	lbs (kN)	gal/min/ft ²	sec-1	US Sieve (mm)
TF-200W	200 x 200	--	75 x 75	5	0.05	40 (0.425)
TF-300W	315 x 315	--	113 x 113	7	0.08	40 (0.425)
TF-320W	2640 x 2640 (38.5 x 38.5)	--	160 x 125 (712 x 556)	--	0.5	40 (0.425)
TF-370W	4140 x 3240 (50.47 x 47.3)	--	150 x 150 (667 x 667)	--	0.9	30 (0.600)
TF-570W	4800 x 4800 (70 x 70)	1920 x 2640 (28 x 38.5)	180 x 180 (801 x 801)	40	0.6	30 (0.600)
TF-402F	2400 x 1740 (32 x 25)	--	115 x 75 (512 x 334)	145	2.1	40 (0.425)
TF-404F	4000 x 3450 (58 x 50)	--	180 x 165 (800 x 734)	70	0.9	40 (0.425)
TF-700F	2700 x 1740 (39 x 25)	--	100 x 60 (445 x 267)	18	0.28	70 (0.212)
TF-1084R	5700 x 7400 (83.2 x 108)	1975 x 4235 (28.8 x 61.8)	350 x 480 (1560 x 2140)	75	1.1	30 (0.600)

	FABRIC WEIGHT (OZ.)	ROLL WIDTH (FT)	ROLL LENGTH (FT)	UNITS/PALLET	PRODUCT SKU	
NONWOVEN GEOTEXTILES	4 OZ.	3	360	20	TF-4NW-3X360	
		4	360	20	TF-4NW-4X360	
		6	360	16	TF-4NW-6X360	
		7.5	360	16	TF-4NW-7.5X360	
		12	360	Loose Rolls	TF-4NW-12X360*	
		15	300	Loose Rolls	TF-4NW-15X300*	
	6 OZ.	12	360	Loose Rolls	TF-6NW-12X360*	
		15	360	Loose Rolls	TF-6NW-15X360*	
	8 OZ.	12	360	Loose Rolls	TF-8NW-12X360*	
		15	360	Loose Rolls	TF-8NW-15X360*	
	10 OZ.	12	360	Loose Rolls	TF-10NW-12X360	
		15	300	Loose Rolls	TF-10NW-15X300	
	12 OZ.	12	360	Loose Rolls	TF-12NW-12X360	
		15	300	Loose Rolls	TF-12NW-15X300	
	16 OZ.	12	360	Loose Rolls	TF-16NW-12X360	
		15	300	Loose Rolls	TF-16NW-15X300	
	GROUND COVER FABRICS (Woven)	3 OZ.	3	300	49	TF-GC3-3X300
			4	300	56	TF-GC3-4X300
6			300	64	TF-GC3-6X300	
10			300	Loose Rolls	TF-GC3-10X300	
12			300	Loose Rolls	TF-GC3-12X300	
15			300	Loose Rolls	TF-GC3-15X300	
NEEDLE PUNCHED GROUND COVER FABRICS	5 OZ.	3	250	30	TF-GCNP5-3X250	
		4	250	30	TF-GCNP5-4X250	
		5	250	25	TF-GCNP5-5X250	
		6	250	25	TF-GCNP5-6X250	
		8	250	20	TF-GCNP5-8X250	
		12	250	Loose Rolls	TF-GCNP5-12X250	

*Available in DOT/NTPEP approved and contractor grade



EROSION CONTROL

Erosion Control Solutions

From temporary erosion control blankets (ECBs) to permanent turf reinforcement mats (TRMs), woven high-performance turf reinforcement mats, open weave textiles, and scour transition mats, there is a solution for your erosion control and revegetation needs. Secured with one of our many fastener and anchor solutions.

EROSION CONTROL BLANKETS STRAW



Product Description: Single Net Straw and Double Net Straw Mats

Net Type: Synthetic or Natural net

Unit Size: 8' x 112.5' and 16' x 112.5',
8' x 562.5', 16' x 562.5'
Other sizes available as special order

Additional Details: Functional longevity ranging between 90 days and 12 months, depending on net selected. Uses include mild to moderate slopes and channels where vegetation is expected to control erosion long-term.

EROSION CONTROL BLANKETS STRAW/COCONUT & COCONUT



Product Description: Double Net Straw/Coconut, & Coconut Blankets

Net Type: Synthetic or Natural Net

Unit Size: 8' x 112.5' and 16' x 112.5',
8' x 562.5', 16' x 562.5'
Other sizes available as special order

Additional Details: Functional longevity ranging between 18 and 36 months, depending on product selected. Uses include mild to moderate slopes and channels where vegetation is expected to control erosion long-term.

- High-performance protection of topsoil from wind and water erosion
- Support quick, healthy vegetation growth
- Protect dormant seeds during winter
- Stabilize slope erosion
- Reinforce vegetation roots and stems
- Protect water quality in lakes, rivers, & streams
- Extend the use of vegetation in areas where vegetation alone cannot withstand erosion

PERMANENT (TRMs) TURF REINFORCEMENT MATS

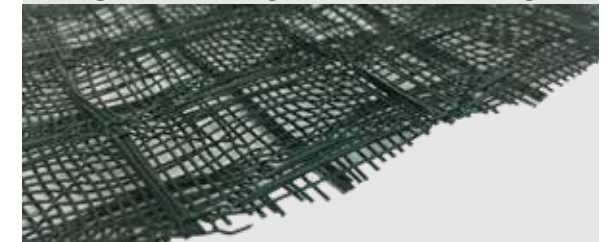


Product Description: Double net mats with 100% synthetic fiber components and composite triple net TRMs.

Unit Size: 8' and 15' wide rolls in varying lengths

Additional Details: Provide significant resistance to hydraulic forces and reinforcement of established vegetation. Uses include moderate to high flow channels, shorelines, and steep slopes.

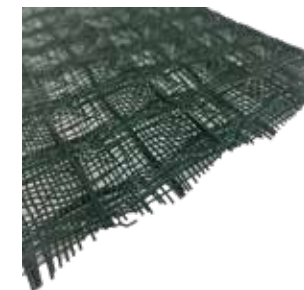
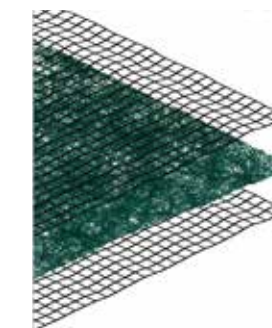
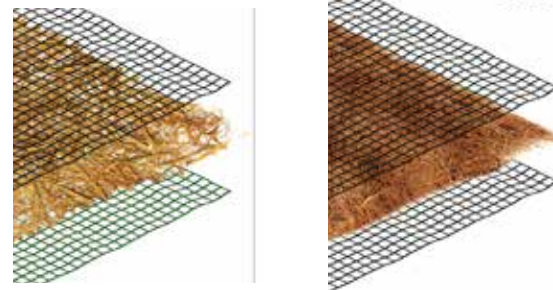
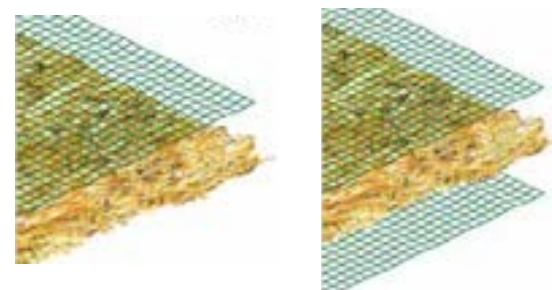
HIGH-PERFORMANCE (HPTRM) TURF REINFORCEMENT MATS



Product Description: Woven 3-D mat offering high strength at low strain

Unit Size: Rolls 8', 11.5', and 15' wide typical

Additional Details: HPTRMs provide superior resistance to hydraulic stresses and UV degradation for a reinforced vegetative solutions to traditional hard armor.





Open Weave Biodegradable Mats

Selecting an open weave matting made from natural, biodegradable fibers such as jute or coir, can be an alternative to erosion control blankets. Coir mats are durable, and long-lasting due to weight and strength, and their open form allows specialty vegetation more space to grow.

JUTE FIBER MATS

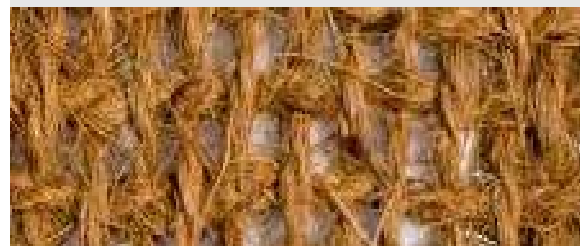


Product Description: ECB produced from jute fiber spun yarns.

Unit Size: 4' x 225' roll

Additional Details: 100% Biodegradable and functional longevity of 6-9 months. Helps reduce moisture loss and promotes vegetation establishment.

COIR FIBER MATS



Product Description: 400, 700, & 900g ECB composed of 100% hand-spun coir yarns.

Unit Size: 6.6' x 166' roll

Additional Details: 100% Biodegradable mat for supporting growth and vegetation development. Provide protection for up to 36 months.



SHOREMAX TRANSITION MAT



Product Description: Flexible UV stabilized transition mat for effective erosion protection from turbulent water flow and moderate wave attack.

ShoreMax: Flexible UV-stable rubber mat, Unit Size: 3' x 5' panel



Easy Installation for Erosion Control Solutions

Installation of rolled erosion control products (RECPs) can be done in 5 basic steps

- Prepare soil as necessary
- Apply seed and soil amendments
- Unroll RECP on prepared site
- Secure RECP with fasteners
- Water and watch vegetate



Rolled Erosion Control Products						
	Product	Net Description	Matrix Material	Longevity (months)	Typical Slope Application	Channel Application thresholds
Short-term Temporary ECBs	SR-1	Lightweight, photodegradable synthetic top net	Straw	≤ 12	3:1	≤ 1.6 psf / 5.0 fps
	SR-1RG	Lightweight, accelerated photodegradable synthetic top net	Straw	≤ 3	3:1	≤ 1.6 psf / 5.0 fps
	SR-1NN	Woven, Biodegradable jute top net	Straw	≤ 12	3:1	≤ 1.6 psf / 5.0 fps
	SS-2	Lightweight, photodegradable synthetic top & bottom nets	Straw	≤ 12	2.5:1	≤ 1.8 psf / 6.0 fps
	SS-2RG	Lightweight, accelerated photodegradable synthetic top & bottom nets	Straw	≤ 3	2.5:1	≤ 1.8 psf / 6.0 fps
	SS-2NN	Woven, Biodegradable jute top & bottom nets	Straw	≤ 12	2.5:1	≤ 1.8 psf / 6.0 fps
Extended-term Temporary ECBs	CS-3	UV-extended synthetic photodegradable top & bottom nets	Straw/Coconut	≤ 24	2:1	≤ 2.0 psf / 7.0 fps
	CS-3NN	Woven, Biodegradable jute top & bottom nets	Straw/Coconut	≤ 24	2:1	≤ 2.0 psf / 7.0 fps
	CC-4	UV-extended synthetic photodegradable top & bottom nets	Coconut	≤ 36	1:1	≤ 2.3 psf / 8.0 fps
	CC-4NN	Woven, Biodegradable jute top & bottom nets	Coconut	≤ 36	1:1	≤ 2.8 psf / 9.0 fps
Permanent Turf Reinforcement Mats (TRMs)	PP5-8	UV-stable permanent synthetic top & bottom net	UV-stable Synthetic fiber	≥ 36	1:1	≤ 8 psf / 12 fps
	PP5-10	UV-stable permanent synthetic top & bottom net	UV-stable Synthetic fiber	≥ 36	1:1	≤ 12 psf / 15 fps
	PP5-12	UV-stable permanent synthetic top & bottom net	UV-stable Synthetic fiber	≥ 36	1:1	≤ 12 psf / 15 fps
	S200	UV stable synthetic top & bottom net, crimped center net	Straw	≥ 36	1:1 & Greater	≤ 10 psf / 15 fps
	SC250	UV stable synthetic top & bottom net, crimped center net	Straw/Coconut	≥ 36	1:1 & Greater	≤ 10 psf / 15 fps
	C350	UV stable synthetic top & bottom net, crimped center net	Coconut	≥ 36	1:1 & Greater	≤ 12 psf / 18 fps
High-Performance TRMs	PP5-Pro	Basic HPTRM with UV-stable, woven synthetic construction 7.5 oz/SY 3,200 x 3,000 lb/ft Tensile				12 psf / 20 fps
	PP5-Xtreme	Optimized HPTRM for channels and slopes, UV-stable, high strength woven synthetic design 9.2 oz/SY 4,000 x 3,000 lb/ft Tensile				17 psf / 25 fps
Transition Mat	ShoreMax	UV-stable rubber mat with 1.2" aperture openings		≥ 36		Up to 8.5 psf / 19.5 fps
Open Weave Fiber Mats	CoirMat 400	Coconut Coir fiber woven mat, 400 g		≤ 36		
	CoirMat 700	Coconut Coir fiber woven mat, 700 g		≤ 36		
	CoirMat 900	Coconut Coir fiber woven mat, 900 g		≤ 36		
	JuteMat	Woven jute fiber mat		≤ 6-9		

Erosion Control Installation Tools

For proper installation of erosion control blankets and turf reinforcement mats, ground fasteners must be used to secure the matting in place. See the Ground Fasteners section for more information on the available staples, stakes, pins, and anchors that can be used with the rolled erosion control products.

Additionally, the UnReel Installer is a tool that can be used with our 8' and 16' standard rolls to expedite installation of product on site.



UNREEL INSTALLER

Product Description: Lightweight aluminum installer using dual-action roller bars for smooth and low tension unreeling of rolled erosion control products

Unit Size: 8.5 x 2 x 2' or 16.5 x 2 x 2' for use with rolled erosion control products

Additional Details: With sturdy wheels and pull handle, the UnReel Installer can be moved around by hand. Or with an added hitch can be used as a pull behind, or mounted on trailers or trucks.





BASE REINFORCEMENT

Base Reinforcement

Select durable geosynthetic material that has unique performance in applications such as soil stabilization, foundation reinforcement, road construction, and other retaining structures.

- Biaxial geogrids provide stabilization and filtration for road base fill.
- Geogrid apertures allow aggregate to strike through and provide confinement and interlock
- Base reinforcement products can help extend the life and performance of roads or other surface builds
- Helps create a free-draining separation barrier compared to geotextile when used as a separation layer.

BIAXIAL GEOGRIDS



Product Description: High tensile strength polypropylene geogrids designed for base reinforcement and subgrade improvements

Unit Size: 12.5' x 164', 12.5' x 328' typical

Additional Details: Resists high, short-term dynamic loads or moderate loads over longer time periods

SOIL REINFORCEMENT GEOGRIDS



Product Description: Multi-filament polyester yarns woven into a geogrid. Primarily used for soil reinforcement applications such as retaining walls, steep slopes, soft soil embankment stabilization

Additional Details: PVC coated yarns, UV resistant and stable in pH range of 2 to 13

GEOCELLULAR CONFINEMENT



Product Description: Three-dimensional honeycomb structure designed to confine and stabilize fill materials.

Unit Size: Available in varying depths and dimensions

Additional Details: Can be utilized in a wide range of applications including: slope protection, erosion control, channel protection, shorelines, and retaining walls.

CONSTRUCTION MATS



Product Description: Composite ground mat designed to support heavy traffic weights from construction activities and produced the ground below, and reduce sinking and likelihood of equipment becoming stuck.

Additional Details: Resuable, easy to handle, allows for increased traction. Applications include construction, landscaping, temporary paths and roads.





NURSERY PRODUCTS

Along with our selection of landscape and ground cover fabrics, nursery operations can benefit from our tree staking and tree guying products. Can also be used with our anchoring solutions.

Base Reinforcement				
		SKU	Roll Dimensions (Width x Length)	Rolls/TL
Biaxial Geogrids	SQ	TF-SQ1515	12.5' x 328'	240
		TF-SQ2020	12.5' x 328'	120
		TF-SQ3030	12.5' x 164'	160
	BX	TF-BX1100	12.5' x 328'	230
		TF-BX1200	12.5' x 246'	168
		TF-BX1300	12.5' x 164'	260
		TF-BX1500	12.5' x 164'	160



EZ TREE STAKING KITS



Product Description: Tree guying kit includes 3, 8' long, 3/4" tree tie straps with 300 lb strength clips, and 3 eco-friendly notched hardwood stakes.

Unit Size: Available in Single kit packages or bulk packaging of 20 kits.

Additional Details: Resists high, short-term dynamic loads or moderate loads over longer time periods.

TREE TIE STRAPS



Product Description: Tree tie is available in 3/4" wide by 500' spool. Tree tie strap can handle up to 1000 lbs strength.

Unit Size: 3/4" x 500' spool, 1 spool per box.

Additional Details: Tree Tie Straps can be used to secure trees and other items with additional ground fasteners and anchors.

EZ Tree Staking Kit Includes:

- 3 – 12 INCH Notched Wood Stakes
- 3 – 8 FT Straps with Precise Adjustable Tensioners





SEDIMENT CONTROL

Sediment Control can take many forms. Below are our offerings using natural fibers for sediment filtration and settlement, including sediment logs, and silt fence alternatives.

STRAW WATTLES



Product Description: Straw fiber fill in a tubular synthetic netting

Unit Size: 9" x 25', and 12" or 20" diameters in 10' and 20' lengths

Additional Details: Install in place using wood or metal stakes on 3' spacing (typical). Functional longevity around 12 months. Straw wattles are intended for use on slopes and in channels to restrict sediment laden flow.

- Prevent eroded sediment movement from construction sites
- Reduce loss of soils from stockpiles
- Prevent sediment pollution of waterways

COIR LOGS



Product Description: Coconut fiber encased in a natural netting

Unit Size: 12" x 10', 7 lb density
Other sizes and densities may be available as special order

Additional Details: Functional longevity ranging between 3-5 years. Completely biodegradable, excellent for streambank restoration and bio-engineering applications.

- Prevent clogging of drains, sewers, etc. with sediment and debris
- Discharge filtered and clean water from active construction sites.

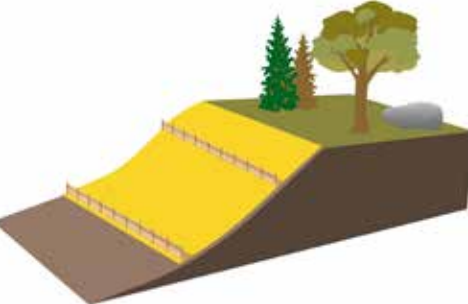
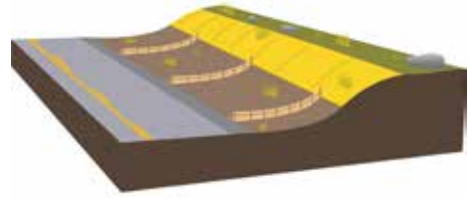
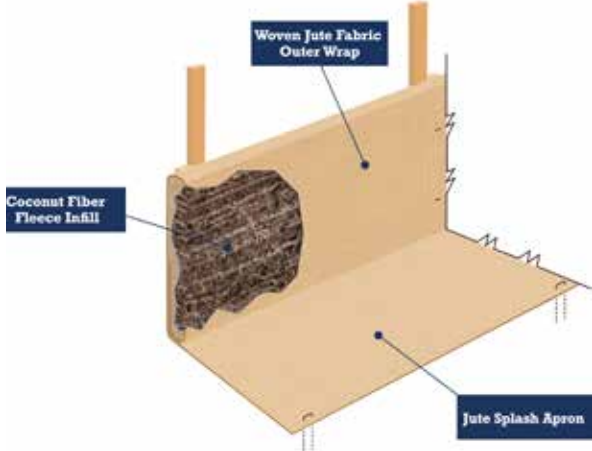
WATTLEFENCE



Product Description: Sediment retention device constructed from a fleece of coconut fiber wrapped in biodegradable woven jute fabric.

Unit Size: 9" x 100' unit, 12" x 100', and 18" x 100'

Additional Details: WattleFence combines the features of wattles and silt fence to reduce sediment and turbidity with a 100% biodegradable silt and sediment fence.





Sediment Control using geotextiles can also be effective. Below are our offerings using geotextile fabrics for sediment filtration in active turbid water applications.

DEWATERING BAGS



Product Description: 8 oz. or 10 oz. sediment filtration bags

Designed to filter sediment and other pollutants from runoff generated during construction activities.

Unit Size: Variety of sizes and capacities

SILT SACKS



Product Description: Reusable silt sack for storm grate filtration. Allows sediment to settle from sediment-laden stormwater.

Unit Size:
Hi-Flow sacks available in:
2'x2'x3' and 2'x3'x3'

Regular Flow sacks in: 2'x4'x3'

TURBIDITY BARRIER



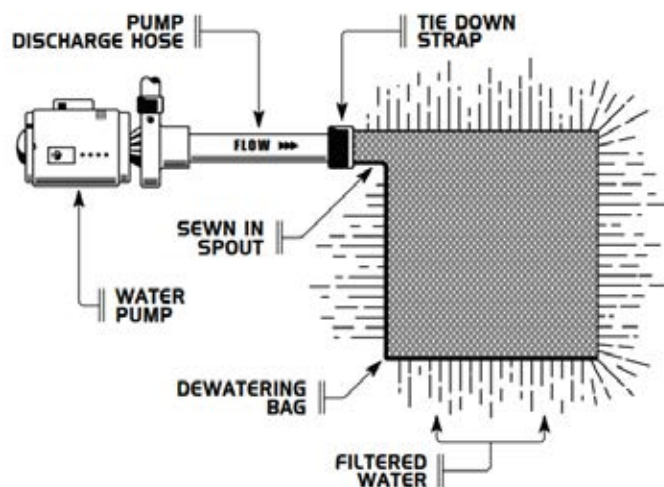
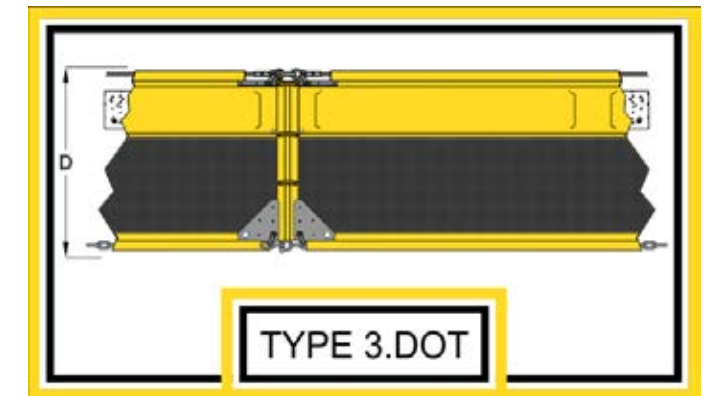
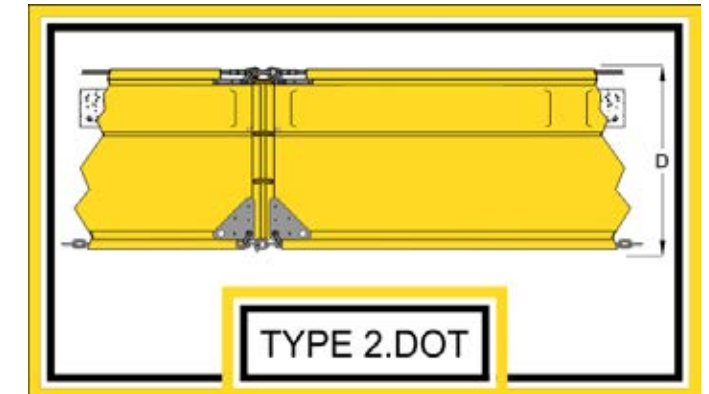
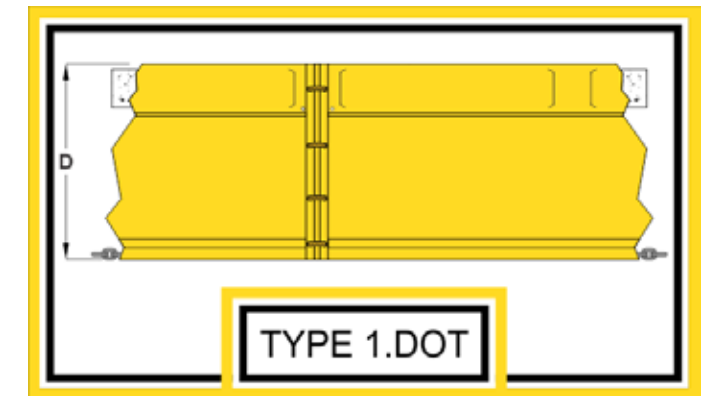
Product Description: Permeable or impermeable floating barriers to restrict sedimentation near bodies of water.

Type I: Impermeable barrier, use for locations allowing limited winds and currents, such as small streams, and shallow lakes, 5' x 50'

Type II: Impermeable barrier with top load cables and stress plates for corner reinforcement. Use for currents up to 5 fps or wave action is present, such as tides, streams, lakes, inter-coastal areas 5' x 50'

Type III: Permeable barrier of filter fabric with the impermeable fabric areas designed for currents up to 5 fps or where wave action is present. The filter fabric reduces pressure on the curtain while retaining silt, 5' x 50'

Staked: Impervious PVC fabric with wood stakes, 44.5" x 48'





Sediment Retention Fiber Rolls				
		SKU	Log Dimensions (Diameter x Length)	Logs/Bundle
Straw Wattles	9 IN	ST-9X10	9" X 10'	28
		ST-9X20	9" X 20'	14
		ST-9X25	9" X 25'	14
	12 IN	ST-12X10	12" X 10'	20
		ST-12X20	12" X 20'	10
	20 IN	ST-20X10	20" X 10'	14
ST-20X20		20" X 20'	7	
Coir Logs	7 lb Density, Coir Net	COIR LOG 12X10	12" x 10'	20
Coir Logs USA MADE	7 lb Density, Coir Net	COIR-S-12X12	12" x 12'	16
		COIR-S-16X12	16" x 12'	9
		COIR-S-20X12	20" x 12'	4/6
	9 lb Density, Coir Net	COIR-P-12X12	12" x 12'	16
		COIR-P-16X12	16" x 12'	9
		COIR-P-20X12	20" x 12'	4/6
WattleFence	Biodegradable Fence	WF-9X100	9" x 100'	16
		WF-12X100	12" x 100'	16
		WF-18X100	18" x 100'	16

Sediment Retention Fabric Products				
	Grade	SKU	Dimensions (Width x Length)	Units/Bundle
Dewatering Bags	8 OZ	TF-DB8-5X6	5' x 6'	180
		TF-DB8-6X9	6' x 9'	TBD
		TF-DB8-7.5X8	7.5' x 8'	100
		TF-DB8-10X10	10' x 10'	60
	10 OZ	TF-DB10-10X15	10' x 15'	45
		TF-DB10-15X15	15' x 15'	25
		TF-DB10-15X30	15' x 30'	15
Silt Sack	HI-FLOW	TF-SSHF-2X2X3	2' x 2' x 3'	500
		TF-SSHF-2X3X3	2' x 3' x 3'	500
	REGULAR FLOW	TF-SSRF-2X4X3	2' x 4' x 3'	250
Turbidity Barriers	Type 1	TF-TB-TYPE1	5' x 50'	7
	Type 2	TF-TB-TYPE2	5' x 50'	5
	Type 3	TF-TB-TYPE3	5' x 50'	TBD
	Staked	TF-TB-STAKED	44.5" x 100'	56





ANCHOR SOLUTIONS

Percussion driven Falcon Anchors can offer innovative, cost-effective solutions for stabilizing ground fabrics, mattings, grids, and more.

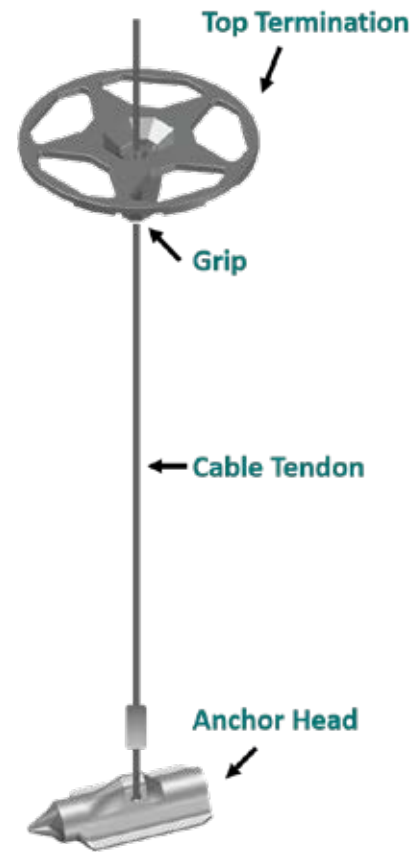
PERCUSSION DRIVEN ANCHORS



Product Description: Falcon Anchors ground anchors in different assembly configurations, designed to grip and dig into the soil for high-strength performance.

Unit Options: 80, 120, & 170 mm anchor head sizes, with varying cable and 2 cap options, 4" diameter X cap, and the 6" diameter SW cap.

Additional Details: Anchor assemblies can offer typical working loads from 750 to 3,000 lbs of pullout strength. See the chart for additional information. Requires a minimum of a drive rod for installation.



Falcon Anchor Components (left to right): Anchor heads, 80mm, 120mm, & 170mm. Top Termination caps, X Cap, SW cap, S cap.



INSTALLATION TOOLS



Titan Gas Powered Driver - 2"

Powerful and portable commercial-duty post driver. Honda GX35 1.3 hp, 4 stroke engine. Accommodates up to a 1 7/8" post, pipe, rod, or stake. Additional 1/2" and 3/4" adapter sleeves available. The gas powered driver must be used with an adapter sleeve matching the drive rod diameter. Other drivers and components available on request.



JackJaw 226 Drive Rod Puller and Cable Setter

Easily pulls 1/2" & 3/4" drive rods, and sets anchor cables. 50lb push on the handle generates 1050 lbs of grip force and 450 lb breakout force on the rod.

Drill end, SDS Max



Drill end, Standard



Anchor end, turn down



Anchor end, contractor turn down

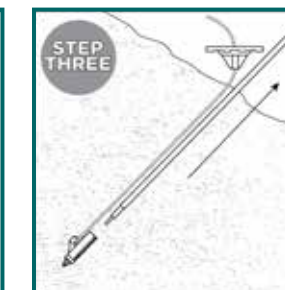


Steel Drive Rods

FRS (Small): 1/2" diameter, 4ft length, for use with our F80 anchors

FRM (Medium): 3/4" diameter, 4, 5, 6, 7 ft length options, Standard and SDS Max ends, for use with F80, F120, & F170 anchors

FRL (Large): 1" diameter, 7 & 9 ft length options, Standard and SDS Max ends, for use with F120 & F170 anchors





The Falcon Hex pins are fasteners that provide greater pullout strength than typical straight pins and staples. Available in configurations specialized for different soil types, for improved performance.

FALCON HEX PINS

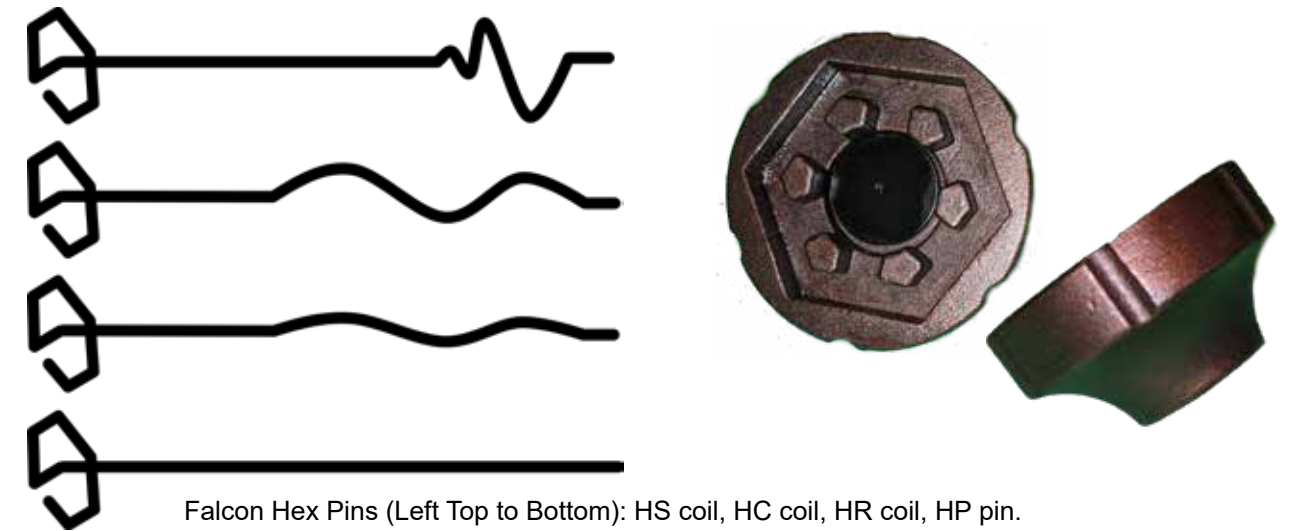


Product Description: Anchor pins with hexagonal heads, and varying coil options to allow for securing in all soil types from soft & sandy to hard, rocky soils

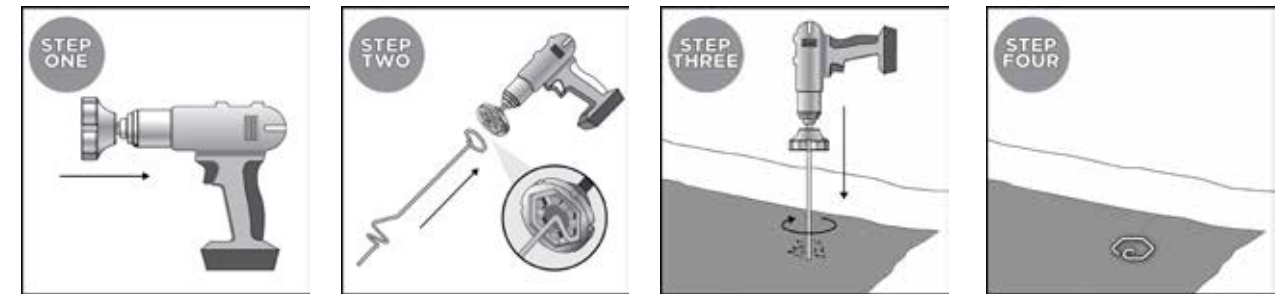
Unit Size: Four main coil types HS- for soft, sandy soils, HC- for compact, clay soils, and HR for hard, rocky soils. HP- straight pins for use with fabrics and geotextiles. Available in 8" and 12" options

Additional Details: Provides up to 10x the holding strength compared to standard U-shaped sod staple and fabric pins. Install with the hex head chuck and a hand drill for fast install.

- Slope stabilization of soils under a potential failure plane
- Increase the loading and survivability of erosion control systems in channels
- Solar bracing and tensioning applications.
- Staking and tie-down applications for temporary structures such as tents and recreational equipment
- Tree staking or guying applications



Falcon Hex Pins (Left Top to Bottom): HS coil, HC coil, HR coil, HP pin. HP Installation Chuck (right)
Four easy installation steps with Falcon Hex Pins (below).





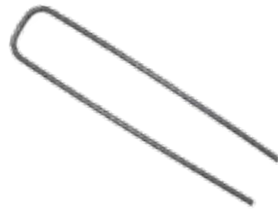
Falcon Percussion Driven Anchors				
	Cable Type	SKU	Description	Typical Working Load
Falcon Anchors	Zinc-Aluminum Cable	F80-X-Z3	3' Cable, 80mm anchor with end cap	750 lbs
		F80-X-Z6	6' Cable, 80 mm anchor with end cap	750 lbs
		F120-X-Z6	6' Cable, 120 mm anchor with end cap	750 lbs
		F120-SW-Z6	6' Cable with 120 mm anchor and large 6" end cap	2,500 lbs
		F170-SW-Z6	6' Cable with 170 mm anchor and large 6" end cap	3,000 lbs
	Stainless Steel	All anchors can be made with stainless steel cable.		
Anchor Installation Tools	Drive Rods	FRS-4	1/2" Steel Rod, in 4' length	For use with 80mm anchor
		FRM-	3/4" Steel Rod, 4,6,7,9' options	Use with 80 & 120 mm anchor
		FRM-SDS	3/4" Steel Rod, 4,6,7' options, SDS Max end	Use with 80, 120, 170 mm anchor
		FRL-	1" Steel Rod, 7, 9' options	Use with 170 mm anchor
	JackJaw	JACKJAW-226	Extractor Tool, up to 3/4" cable/rod	
Gas Powered Driver	GDP-2	2" gas powered driver		

Falcon Hex Pins			
	SKU	Dimensions	Pullout Resistance
Soft, Sandy Soil	HS-8	1.5" head x 8" Length	Up to 200 lb (900 N)
	HS-12	1.5" head x 12" Length	Up to 250 lb (1.1 kN)
Compact, Clay Soil	HC-8	1.5" head x 8" Length	Up to 170 lb (750 N)
	HC-12	1.5" head x 12" Length	Up to 200 lb (900 N)
Hard, Rocky Soil	HR-8	1.5" head x 8" Length	Up to 100 lb (450 N)
	HR-12	1.5" head x 12" Length	Up to 150 lb (675 N)
Hex Head Straight Pins	HP-6	1.5" head x 6" Length	Variable
	HP-8	1.5" head x 8" Length	Variable
	HP-12	1.5" head x 12" Length	Variable
	HP-18	1.5" head x 18" Length	Variable
Installation Tools	HP-CHUCK	Magnetic Drill chuck attachment for use with any Hex pins	



GROUND FASTENERS

WIRE U-SHAPED STAPLES



Product Description: Wire fasteners available in U-shaped staples in 11 gauge and 8 gauge.

Additionally, 3/8" rebar staples are also available in multiple lengths.

Additional Details: Wire staples and pins are available in several lengths.

- Securing erosion control blankets and turf reinforcement mats
- Securing sediment control devices such as wattles, logs, and silt fencing

WIRE ROUND TOP STAPLES



Product Description: Wire fasteners available 11 gauge 1.5" circle top, single leg fasteners.

Additional Details: Round top pins can be used with our magnetic staple stick.

- Securing woven and nonwoven geotextile fabrics
- Base Reinforcement securing
- Anchoring transition mats

FABRIC PINS



Product Description: Steel pins with a washer, available in multiple lengths.

Additional Details: Fabric pins are best used when installing fabrics and other tighter weave materials. Not ideal for rocky soils or very soft soils.

WIRE STAPLE INSTALLATION TOOL



Product Description: Simple installation tools to help with the installation of wire fasteners.

Staple Stick: metal handled tool with a magnetic head. For use with Round top staples.

Single Shot Staple Gun: Spring loaded tool helps install single 6", 11 gauge U staples.

Additional Details: Sold Separately from the fasteners.





WOOD BLANKET PEGS



Product Description: The EcoPeg wood stakes are hardwood netting pegs used to secure erosion control blankets, fabrics, sediment devices and more.

Available in 6", 8", and 12" lengths.

Additional Details: Biodegradable alternative to wire fasteners, can be used in most soil types.

WOOD LOG STAKES



Product Description: Straight stakes with tapered or pencil point tips.

Available in multiple diameters and lengths.

Additional Details: Wood stakes can be used with sediment wattles, coir logs, silt fence, and more.

BIODEGRADABLE GREEN STAKES

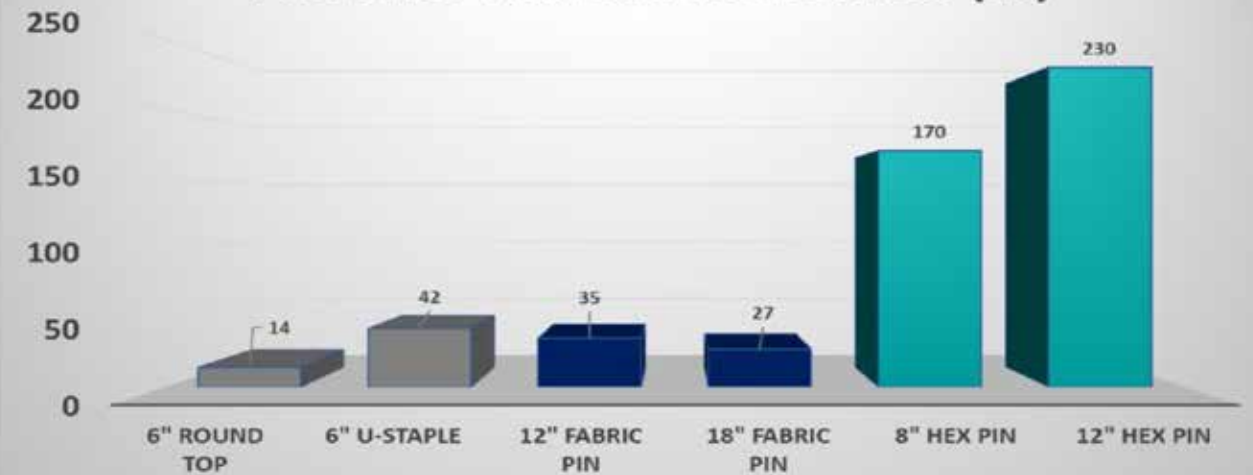


Product Description: T-shaped stakes made from biodegradable plastic.

Unit Size: Available in 4" and 6" lengths, boxes of 500

Additional Details: Great for use with all-natural products and in sensitive areas. Best in cohesive soils. 1-2 year longevity.

Fastener Pullout Resistance (lb)





Wire and Plastic Fasteners			
Fastener	SKU	Description	Unit/Box
Steel Wire Staples	STAPLE 6X1X6	6" U-staples, 11 gauge steel wire	1000
	STAPLE RT 6	6" Round top staples, 11 gauge steel wire	1000
	STAPLE 8X2X8	8" U-staples, 11 gauge steel wire	1000
	STAPLE REBAR 12	12" Rebar U-staple, 3/8"	Loose
	STAPLE REBAR 18	18" Rebar U-staple, 3/8"	Loose
Fabric Pins with Washer	STA PINS 12	12" straight steel pin with 1.5" steel washer	100
	STA PINS 18	18" straight steel pin with 1.5" steel washer	100
	STA PINS 24	24" straight steel pin with 1.5" steel washer	100
Wire Fastener Installation Tool	STAPLE STICK	Magnetic head installation tool for use with 6" Round top staples	each
	STAPLE GUN SS	Single shot gun for use with the 6" U-staples	each
Biodegradable Plastic Stakes	STAKE BIO 4-500	4" Green biodegradable plastic T-stake	500
	STAKE BIO 6-500	6" Green biodegradable plastic T-stake	500

Wood Stakes			
Fastener	SKU	Description	Unit/Box or Bundle
EcoPeg Netting Peg	STAKE WOODEN 6-NP	6" EcoPeg Netting Peg with Notch	1000
	STAKE WOODEN 8-NP	8" EcoPeg Netting Peg with Notch	500
	STAKE WOODEN 12-NP	12" EcoPeg Netting Peg with Notch	500
Wood Log Stakes (Two Sided Taper)	STAKE WOODEN 18	1"x1"x18" Log Stake	20
	STAKE WOODEN 24	1"x1"x24" Log stake	20
Wood Log Stakes (Pencil Point)	STAKE HUB 18-1X1	1"x1"x18" Log Stake	50
	STAKE HUB 24-1X1	1"x1"x24" Log stake	50
	STAKE HUB 36-1X1	1"x1"x36" Log stake	25
	STAKE HUB 24-2X2	2"x2"x24" Log stake	25
	STAKE HUB 36-2X2	2"x2"x36" Log stake	25

INSTALLATION FASTENER SELECTION GUIDE

		Wire U Staples		Circle Top	Fabric Pins			Eco-Pegs			Wood Stakes			Green Stakes		Rebar Staples		Hex Pins Straight				Hex Pins (3 coil types)	
		6	8	6	12	18	24	6	8	12	18	24	36	4	6	12	18	6	8	12	18	8	12
Soil Type	Cohesive Soils	X	X	X	X	X		X	X	X	X	X	X	X	X	X	X	X	X	X	X	X	X
	Soft Soils		X			X	X		X	X	X	X			X	X		X	X	X	X	X	X
	Loose soils & Sand						X			X	X	X				X	X			X	X	X	X
	Hard, rocky Soils				X	X		X	X	X	X	X				X	X	X	X	X			X
System	ECBs	X	X	X	X	X	X	X	X					X	X			X	X	X	X	X	X
	TRMs/HPTRM	X	X	X	X	X	X											X	X	X	X	X	X
	Scour Mats						X										X	X		X	X		X
	Fabrics/Grid	X	X	X	X	X	X										X	X	X	X	X	X	X
Longevity	Sediment Devices						X	X	X	X	X	X									X		
	<3 Years	X	X	X	X	X	X																
	3-5 years							X	X	X	X	X											
Noteworthy	>5 Years															X	X	X	X	X	X	X	X
	Eco-Friendly							X	X	X	X	X	X	X									
	High-strength														X	X						X	X
	Install Device			X										X	X			X	X	X	X	X	X





© 2024
Western Green
4609 E. Boonville-New Harmony Rd.
Evansville, IN 47725
800.772.2040
westerngreen.com

