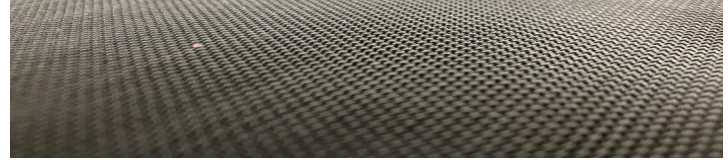


MATERIAL PROPERTY DATA SHEET



Talon Fabrics™ TF402F

Geotextile • Woven Fabric • UV Stabilized •



DESCRIPTION

TF402F is a woven geotextile fabric produced from high-tenacity polypropylene yarns. Production of Talon Fabrics includes internal manufacturing quality control testing in an on-site GAI-LAP (Geosynthetic Accreditation Institute 3-Laboratory Accreditation Program) certified laboratory. Physical properties of the material and expected test results are listed below.

Material Content	
Yarn	High-tenacity polypropylene

Manufacture Process	Woven
---------------------	-------

Standard Roll Sizes		
Width	15 ft	(4.5 m)
Length ± 10%	300 ft	(91 m)
Weight ± 10%*	170 lbs	(77 kg)
Area	500 SY	(418 sm)

Index Property	Test Method	MARV	
Tensile Strength	ASTM D4632	370 x 220 lbs	(1646 x 979 N)
Grab Elongation	ASTM D4632	30% x 15%	
CBR Puncture	ASTM D6241	675 lbs	3003 N
Wide Width Tensile	ASTM D4595	2400 x 1740 lbs/ft	35 x 25 kN/m
Trapezoidal Tear	ASTM D4533	115 x 75 lbs	512 x 334 N
UV Resistance @ 500 hrs	ASTM D4355	90%	
Apparent Opening Size (AOS)	ASTM D4751	40 US STD SIEVE	0.425 mm
Permittivity	ASTM D4491	2.1 sec-1	
Water Flow Rate	ASTM D4491	145 gal/min/ft ²	5908 lt/min/m ²
Percent Open Area	CW-02215 Mod1	10.00%	
NTPEP LISTED:	GTX-2022-01-059	(GTF400EO)	

Disclaimer: The information contained herein may represent physical properties and expected values for specific tests at the time of manufacture, as part of routine quality analysis and control. While believed correct, and every effort for accuracy has been made, seller makes no warranties, express or implied, as to the accuracy of these values, fitness for a particular application, or compliance with any specification. Western Green and its affiliates make no warranty as to the test results obtained from evaluation of delivered material. This data sheet supersedes all previous versions for the style and is subject to change without notice. For further information, please feel free to contact Western Green.

©2024, Western Green.



Rev. 1.2024
Scan for additional and updated product information

